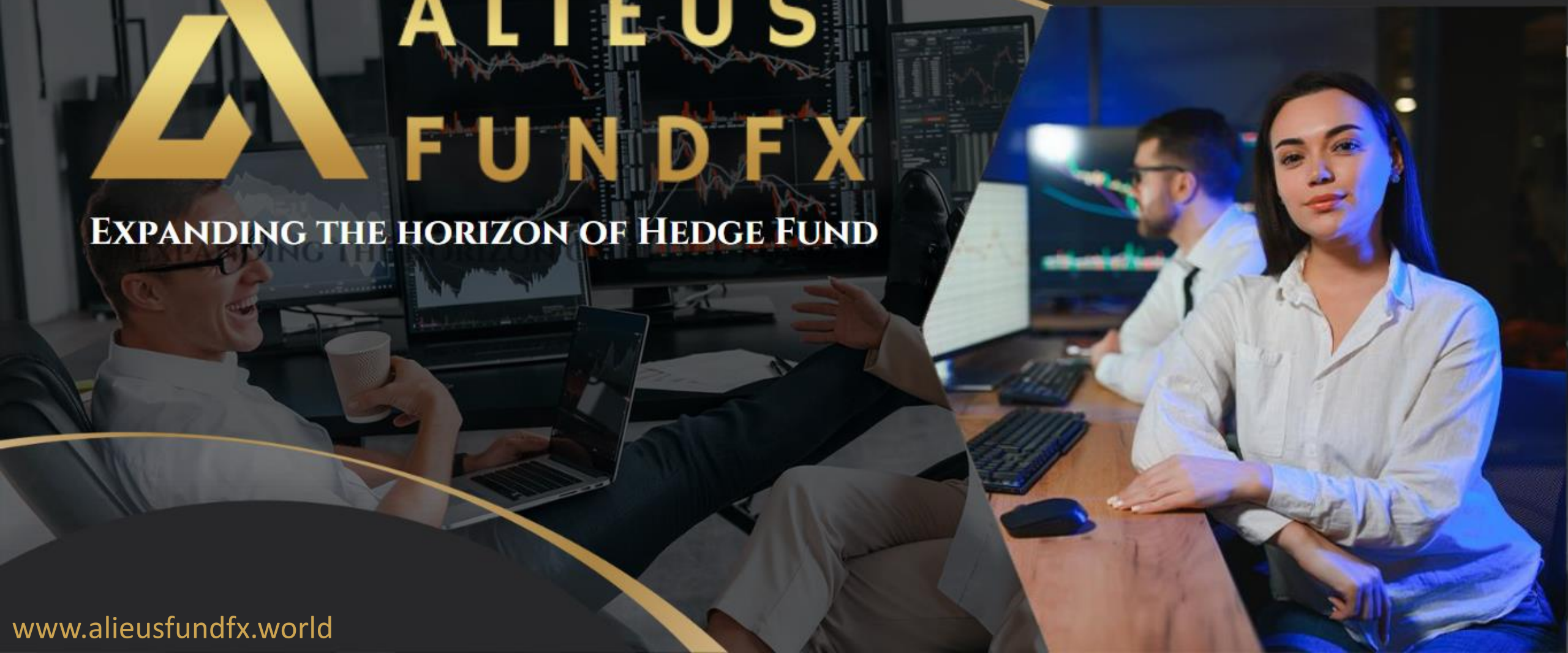




# ALIEUS FUNDFX

EXPANDING THE HORIZON OF HEDGE FUND



A background image of a business meeting. A woman with long brown hair, wearing a light blue blazer, sits at a desk with a laptop. She is looking towards the camera. In the foreground, another person's hands are visible, pointing at a tablet displaying financial charts and graphs. The setting is a modern office with a window and a plant in the background.

## UNDERSTANDING HEDGE FUNDS

# WHAT IS A HEDGE FUND?

A hedge fund is a pooled investment vehicle that uses various strategies to generate returns for its investors. Unlike mutual funds, hedge funds are typically open to a limited range of investors and can employ a wider array of investment strategies.

\*\*\*\*\*

# KEY CHARACTERISTICS

Hedge funds often require investors

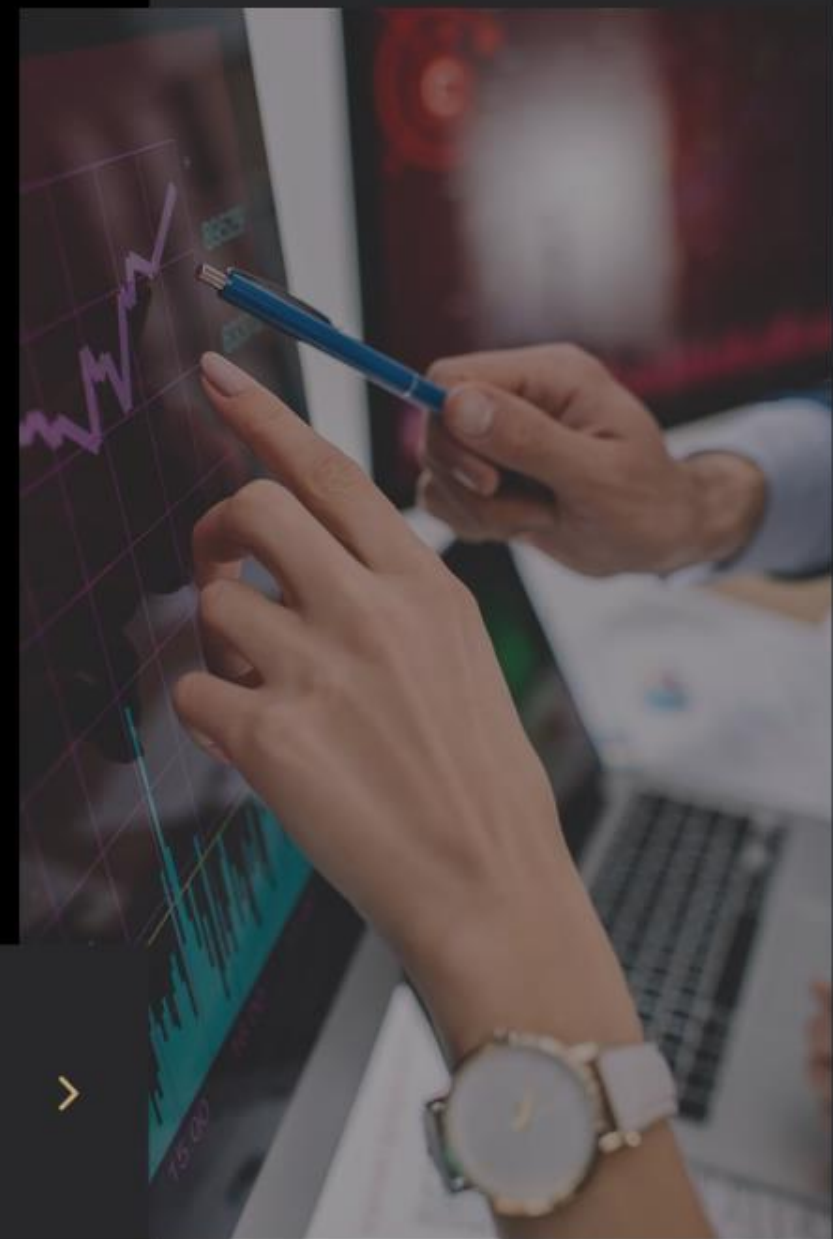
## ACCREDITED INVESTORS:

to be accredited, meaning they must meet certain financial criteria.

**Limited Regulation:** Hedge funds are less regulated compared to mutual funds and other investment vehicles.

**Flexible Strategies:** They can invest in a broad spectrum of assets including equities, bonds, derivatives, and more. profits.

**Fee Structure:** Typically use a "2 and 20" fee structure, where  
\*\*\*\*\*  
there is a 2% management fee and a 20% performance fee on





# COMMON STRATEGIES

**Long/Short Equity:** Buying undervalued stocks while short-selling overvalued ones.

**Market Neutral:** Aiming to achieve returns regardless of market direction by balancing long and short positions.

**Arbitrage:** Exploiting price discrepancies between related securities.

**Event-Driven:** Investing based on events like mergers or bankruptcies.

\*\*\*\*\*

# RISKS & CONSIDERATIONS

---

**Leverage:** Hedge funds may use leverage to amplify returns, which also increases risk.

**Liquidity:** Investments might be less liquid compared to other assets, with lock-up periods and redemption constraints.

**Complexity:** The strategies used can be complex and may involve higher risk.

\*\*\*\*\*



# PERFORMANCE & RETURNS

Hedge fund performance varies widely depending on the strategy and market conditions. They often aim for absolute returns, meaning they seek to make a profit regardless of overall market performance.

\*\*\*\*\*

# HISTORICAL BACKGROUND

---

Hedge funds have been around since the 1940s, with notable growth and evolution over the decades.

\*\*\*\*\*



# KEY TERMS

**Alpha:** A measure of an investment's performance relative to a benchmark index.

**Beta:** A measure of an investment's volatility in relation to the market.

**Drawdown:** A decline in the value of an investment from its peak.

\*\*\*\*\*



# Types of Income



**Trading Profit Sharing**

**Direct Income**

**Team Level Income**

**Rank Income**

# Trading Packages

## Basic

**\$100 to \$2999**

**MONTHLY TRADING PROFIT  
UPTO 5%**

## Standard

**\$3000 to \$4999**

**MONTHLY TRADING PROFIT  
UPTO 6%**

## Premium

**\$5000 to Above**

**MONTHLY TRADING PROFIT  
UPTO 8%**


Minimum Trading Profit (Monthly) Guaranteed = 5%

# Direct Income



5%

# Team Level Income



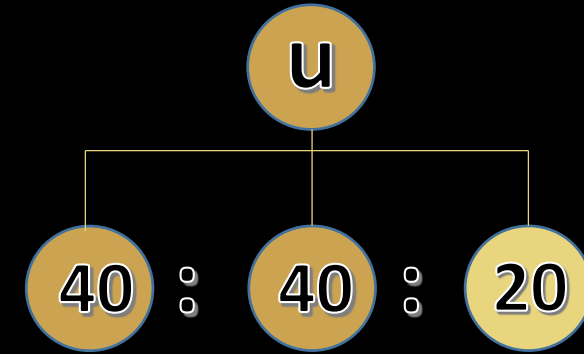
Level	Direct	Incentive
1	1	25%
2	1	15%
3	1	10%
4	1	10%
5	1	10%
6	1	10%
7	1	5%
8	1	3%
9 to 10	1	3%
11 to 15	1	2%
16 to 20	1	1%

Minimum 11 directs then, All levels open

# Rank Income



Sr.no	Rank	Team Business	Generate Income	Daily
1	Star	\$10000	\$1000	\$10
2	Super Star	\$22500	\$2250	\$22
3	Pearl	\$45000	\$4500	\$45
4	Silver	\$90000	\$9000	\$90
5	Gold	\$1.80 LAC	\$18000	\$180
6	Platinum	\$3.6Cr	\$3.60Lac	\$360
7	Diamond	\$7.2Cr	\$72Lac	\$720



**1% x 100 Days  
Monday To Friday**

# TERMS & CONDITIONS

- ✓ ALL INCOMES ARE INCLUDING IN ×3
- ✓ THEN RE-TOPUP THE I'D WITH SAME OR ABOVE PACKAGE
- ✓ MINIMUM WITHDRAWAL :- \$20
- ✓ WITHDRAWAL TIMING :- 7:00 am – 9:00 pm
- ✓ WITHDRAWAL MONDAY TO FRIDAY
- ✓ WITHDRAWAL WITHIN 30-Min TO 24-Hrs

# BONANZA OFFER



Goa

\$1000



Thailand

\$3000



Dubai

\$5000



**ALIEUS  
FUNDFX  
THANK YOU**